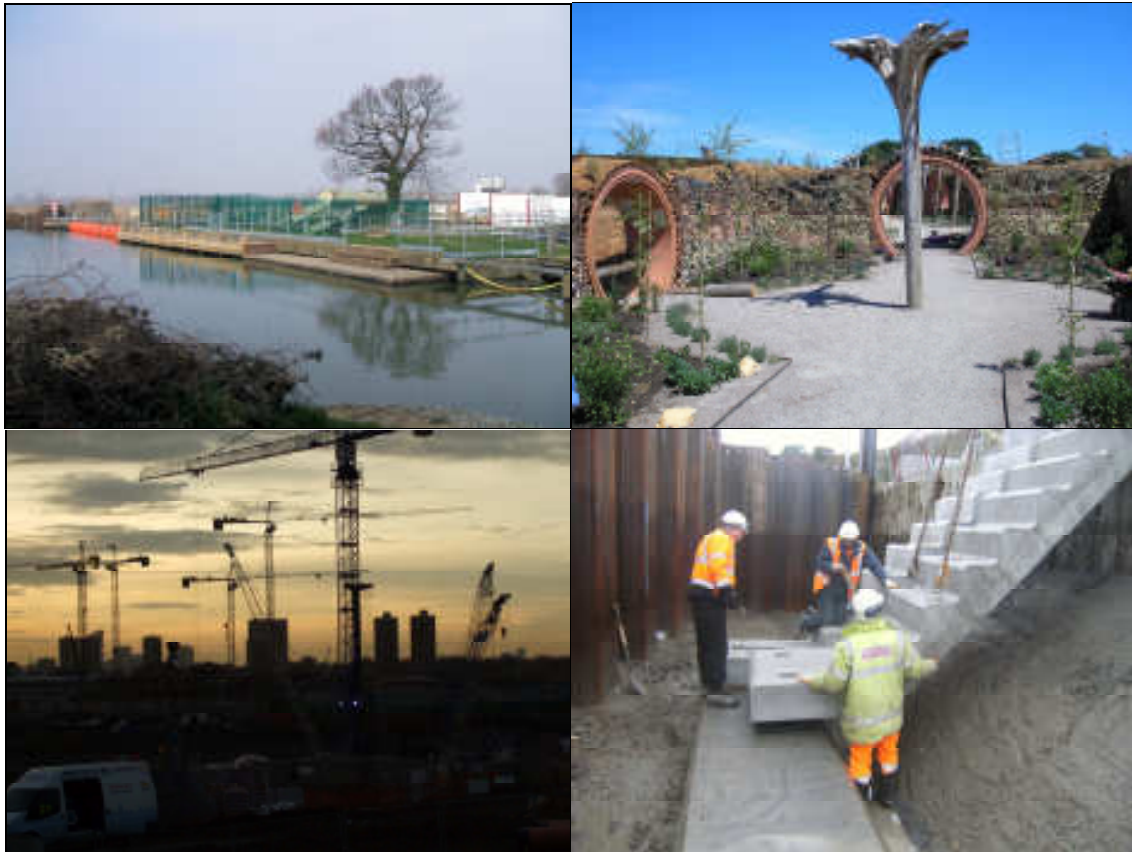


## ENVIRONMENTAL STATEMENT 2008



J Breheny Contractors Ltd  
Flordon Road  
Creting St Mary  
Ipswich  
Suffolk  
IP6 8NH

Telephone: 01449 720282  
Facsimile: 01449 721593  
E-mail: [enquiry@breheny.co.uk](mailto:enquiry@breheny.co.uk)  
Web Site: [www.breheny.co.uk](http://www.breheny.co.uk)

## ENVIRONMENTAL STATEMENT 2008

### COMPANY PROFILE

J Breheny Contractors Ltd is the principal operating division of the Breheny Group of companies based in Creeting St Mary, Suffolk.

Founded in 1963, the Company has developed into a multi-discipline civil engineering organisation with offices and depots in Suffolk, Cambridgeshire and Kent.

Our organisation embraces a non-adversarial approach to the development of client relationships and management of construction projects.



A12 Frostendon Bypass – 1964

Consequently, we maintain an extensive portfolio of public and private clients with a large percentage of our business being derived from long-term relationships. Typical examples of projects that we undertake, with an environmental interest, can be found on pages 16 – 18.

Underlying all group activities is the strongest possible commitment to excellence in Quality, Health and Safety and Environmental issues.

### COMPANY REGISTRATION

Date of Registration: 19 March 1963  
 Registration Number: 753976  
 Status: Private Limited Company

### ORGANISATION

J Breheny Contractors Ltd generally operates throughout East Anglia, the Midlands and Southern England.

However, the Company is not restricted geographically and will tender for any project where it can submit a competitive bid and add value for a key client.

#### Head Office

J Breheny Contractors Ltd  
 Flordon Road  
 Creeting St Mary  
 Ipswich  
 Suffolk  
 IP6 8NH

#### Midlands Office

J Breheny Contractors Ltd  
 Chancellor Close  
 Stukeley Meadows Industrial Estate  
 Huntingdon  
 Cambridgeshire  
 PE29 6EN

#### Southern Office

J Breheny Contractors Ltd  
 Endeavour Park  
 London Road  
 Addington  
 Kent  
 ME19 5SH

Telephone: 01449 720282  
 Facsimile: 01449 721593

Telephone: 01480 459341  
 Facsimile: 01480 414952

Telephone: 01732 223920  
 Facsimile: 01732 223923



## **ENVIRONMENTAL STATEMENT 2008**

### **ENVIRONMENTAL PROGRESS 2008**

Welcome to our Environmental Statement for 2008.

I am pleased to report another year of progress in the development of our environmental management system.

I am particularly pleased to report that there have been no recorded environmental incidents by any Company facility or construction site during 2008. Our continued emphasis on good housekeeping and pollution prevention, together with the dedication of our employees, has produced this great result.

We have continued to measure our performance through five environmental KPIs in 2008. During the year we improved our performance in four out of the five KPIs: CO<sub>2</sub> emissions, recycled aggregate use, environmental incidents and waste production. Full details of our KPIs for 2008 can be found on pages 10 to 14.

Finally I am pleased to report our continued registration to ISO 14001 and EMAS during 2008.

A handwritten signature in blue ink that reads 'J.N.E. Breheny'.

**John Breheny – Chairman**

### **2008 ENVIRONMENTAL HIGHLIGHTS**

- No communications from the Environment Agency or Environmental Health Offices regarding formal cautions, warning letters, interviews under caution, fixed penalty charges and notification of licence breach.
- A reduction in minor environmental incidents from 3 in 2007 to 0 in 2008.
- 268 SHEQ audits of Company facilities and construction projects.
- Continued development of Health and Safety and Environmental DVD Toolbox Talks.
- The successful introduction of Site Waste Management Plans for projects over £300,000.
- A Thomas Brassey Runners Up Award for the Warden Bay Rock Revetment Scheme.



## **ENVIRONMENTAL STATEMENT 2008**

### **ENVIRONMENTAL POLICY STATEMENT**

J Breheny Contractors Ltd is committed, throughout its operations, to respect the environment and to make responsible use of available natural resources.

We will pursue the use of processes, practices, materials or products, which avoid, reduce or control pollution.

In particular, it is our policy to comply with appropriate legislation and regulations, monitor performance and strive for continuous improvement in:

- Efficient use of energy and water
- Recycling of material
- Reducing emissions to air, land and water
- Minimising our impact on the natural and built environment
- Minimising waste disposal to landfill

I, personally, have a specific responsibility to everyone within the Company for ensuring that the necessary means exist to implement and monitor the effectiveness of this policy.

This policy will be reviewed for adequacy during environmental management review meetings, to ensure continual improvement.

A handwritten signature in blue ink that reads 'J.N.E. Breheny'.

**JNE Breheny – Chairman**

**February 2009**

Review Date

Feb 2010

## ENVIRONMENTAL STATEMENT 2008

### ENVIRONMENTAL MANAGEMENT SYSTEM

#### Scope and Registration

Our Environmental Management System (EMS) is registered to ISO 14001: 2004 by BM Trada Certification Ltd. The scope of registration, as outlined in the Registration Schedule, covers Civil Engineering Construction for J Breheny Contractors Ltd. Witham Valley Civil Engineering, which is a subsidiary of J Breheny Contractors Ltd, is not covered.



Our Environmental Management System is also registered to the Eco-Management and Audit Scheme (EMAS).

The scope of registration covers Civil Engineering Construction for J Breheny Contractors Ltd. Witham Valley Civil Engineering, which is a subsidiary of J Breheny Contractors Ltd, is not covered.

Our Environmental Management System covers all activities and facilities of J Breheny Contractors Ltd (excepting Witham Valley Civil Engineering Ltd) and is designed to complement and integrate with Quality Assurance and Health and Safety systems. The main components are outlined overleaf on page 6:





## **ENVIRONMENTAL STATEMENT 2008**

### **ENVIRONMENTAL MANAGEMENT SYSTEM (Continued)**

#### **Environmental Policy Statement**

This is the Statement of the Company's Environmental Policy and is the highest level document. It highlights our corporate aims, particularly our goal of continuous improvement. Our Environmental Policy Statement can be found on Page 4.

#### **Environmental Management Manual**

This is the main management document and provides a detailed over-view of the entire system, as well as its individual components.

#### **Register of Significant Environmental Aspects**

This describes the Significant Environmental Aspects resulting from the Company's activities. We have recently produced an updated version, which is more directly applicable to our civil engineering activities.

#### **Environmental Objectives, Targets and Programme**

The Company sets annual Objectives and Targets to improve facets of environmental performance, particularly those highlighted in the Environmental Policy Statement.

At the same time an Environmental Programme is devised, which assigns responsibility for the achievement of the Objectives and Targets, to named individuals. Where possible, timescales and measurement criteria are also assigned.

#### **Register of Applicable Legal Requirements and Other Requirements**

Environmental Legislation is monitored to ensure that Company procedures comply with all relevant statutory instruments. The register is regularly reviewed to ensure that it remains relevant and up-to-date.

#### **Guidance to Construction Sites**

Environmental guidance for construction sites is contained within an Environmental Code of Practice that is distributed to all Contract and Site Managers. Particularly sensitive sites also receive a Project Environmental Plan and an Environmental Emergency Plan.

#### **Communication of Information**

Environmental information to site workers is communicated via Toolbox Talks and the Company newsletter – 'The Works'. 'Environmental Issues' is an agenda item for monthly Contract Manager and Heads of Management meetings.

#### **Review**

Construction sites are audited for compliance with Company procedures, with a general target interval of no more than 20 working days. During 2008 268 individual audits were completed. Efficacy of the system is also reviewed at 6-monthly Group SHEQ Meetings and through an annual audit of the Environment Department.

## ENVIRONMENTAL STATEMENT 2008

### SIGNIFICANT ENVIRONMENTAL ASPECTS

We have identified 7 Significant Environmental Aspects (SEAs) resulting from our activities:

- Inputs:**
1. Consumption of energy
  2. Consumption of water
  3. Consumption of raw materials
- Outputs:**
4. Emissions to air
  5. Emissions to land and water
  6. Contact with the natural and built environment
  7. Production of waste

Each SEA is listed within our Environmental Policy Statement and Environmental Objectives. For each SEA there is an Environmental KPI which measures it.

Annual Environmental Targets are set to improve our environmental performance. Targets include the development of systems and procedures and measures to improve our performance in at least one SEA per year. Such measures are assigned to named personnel with targeted completion dates within an Environmental Programme. Company SEAs are briefly outlined below:

#### 1. Consumption of Energy

**Activities:**

Consumption of energy by:

- Company offices.
- Workshops and yard facilities.
- Construction site offices.
- Cars, vans and construction plant.

**Environmental Impact:**

Energy consumed by the Company is derived from a mix of electricity, gas, gas oil, diesel and petrol. Electricity itself is generated by a combination of coal, gas, oil, nuclear and renewable energy sources. All energy sources produce emissions to air, land and water. Fossil fuels can result in acidification, global warming and local air quality issues.

**Environmental Objective:** Minimising CO<sub>2</sub> Emissions

**Environmental KPI:** CO<sub>2</sub> Emissions

#### 2. Consumption of Water

**Activities:**

Consumption of water by:

- Company offices.
- Workshops and yard facilities.
- Construction site offices.

**Environmental Impact:**

Water is a scarce natural resource. Consumption of water has implications covering resource depletion and environmental impacts resulting from water treatment and distribution.

**Environmental Objective:** Minimising Office Water Use

**Environmental KPI:** Company Office/ Workshop Water Use

## ENVIRONMENTAL STATEMENT 2008

### SIGNIFICANT ENVIRONMENTAL ASPECTS (Continued)

#### 3. Consumption of Raw Materials

**Activities:**

Consumption of raw materials by:

- Company offices (stationery and electrical equipment).
- Workshops and yard facilities (vehicle and plant maintenance materials).
- Construction site offices (construction materials).

**Environmental Impact:**

The Company is a major consumer of raw materials. Impacts arising from raw materials include resource depletion and the energy used to produce, distribute and dispose of the finished products.

There is scope, subject to clients' specification requirements, to minimise impacts by the types of products purchased ie use of recycled and environmentally sensitive products.

**Environmental Objective:** Promotion of Recycling and Recycled Aggregates

**Environmental KPI:** Company Recycled Aggregate Use

#### 4. Emissions to Air

**Activities:**

Emissions to air include:

- Greenhouse gases, primarily CO<sub>2</sub>, arising from energy use by: Company offices; workshops and yard facilities; construction site offices; cars, vans and construction plant.
- Particulates from exhaust emissions.
- Noise and vibration.
- Dust.

**Environmental Impact:**

Emissions of greenhouse gases have implications for global warming, acidification and together with exhaust particulates, implications for local air quality. Noise, vibration and dust can be a nuisance for neighbours.

**Environmental Objectives:** Minimising CO<sub>2</sub> Emissions  
Minimising Environmental Incidents

**Environmental KPIs:** CO<sub>2</sub> Emissions  
Number of Environmental Incidents

#### 5. Emissions to Land and Water

**Activities:**

Accidental emissions from Company premises:

- Oil, fuel and chemical spills.
- Dust and mud.
- Silt pollution.

**Environmental Impact:**

Accidental emissions to land and water can have very serious implications for local habitats and can cause a nuisance for neighbours. However, effective environmental management procedures can minimise the likelihood and impact of environmental emergencies.

**Environmental Objective:** Minimising Environmental Incidents

**Environmental KPI:** Number of Environmental Incidents

## **ENVIRONMENTAL STATEMENT 2008**

### **SIGNIFICANT ENVIRONMENTAL ASPECTS (Continued)**

#### **6. Contact with the Natural and Built Environment**

**Activities:**

Interaction of Company facilities, particularly construction sites, with the environment:

- Conservation of natural habitats.
- Disruption to communities.
- Contact with archaeological features.

**Environmental Impact:**

The Company operates in a wide variety of natural and man-made environments. The disruptive nature of construction work, if not sensitively managed, can have a major negative impact upon surrounding habitats, communities and archaeological features.

**Environmental Objective:** Minimising Environmental Incidents

**Environmental KPI:** Number of Environmental Incidents

#### **7. Waste**

**Activities:**

Production of waste by:

- Company offices.
- Workshops and yard facilities.
- Construction site offices.

**Environmental Impact:**

Waste produced by the Company impacts upon natural resource depletion and the environmental costs of processing and disposing of the waste at a suitable facility.

**Environmental Objective:** Minimising Waste

**Environmental KPI:** Company Waste Production

## ENVIRONMENTAL STATEMENT 2008

### ENVIRONMENTAL KPIS

#### CO<sub>2</sub> Emissions

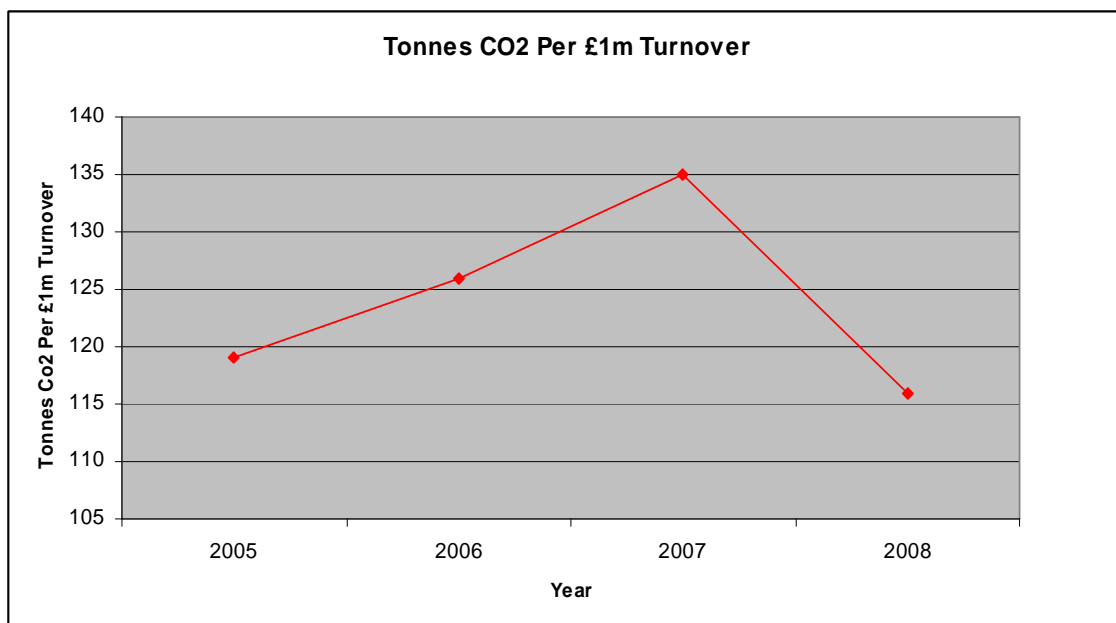
We measure our CO<sub>2</sub> emissions and consequent impact upon global warming. Measurement is based upon the total volume of electricity, natural gas and fuel that is purchased and consumed by our offices, workshops, construction projects, vehicles and plant. We do not currently calculate the external carbon footprint of our supply chain and other project stakeholders.

Volumes for each type of energy used are converted into tonnes of CO<sub>2</sub> using DTI approved conversion factors. There will be natural variations due to the levels of vehicles and plant in our fleet and the average distance employees have to travel during the year.

	2005	2006	2007	2008
Electricity	230	276	227	261
Natural Gas	21	54	38	34
Gas Oil	7,290	7,965	6,288	5,635
Diesel	2,466	2,693	2,562	2,503
Petrol	171	151	92	75
<b>Total Tonnes CO<sub>2</sub></b>	<b>10,178</b>	<b>11,138</b>	<b>9,207</b>	<b>8,508</b>
Turnover	£85,497,395	£88,281,690	£67,979,649	£73,542,720
<b>Tonnes CO<sub>2</sub> Per £1 Million Turnover</b>	<b>119</b>	<b>126</b>	<b>135</b>	<b>116</b>

During 2008 the Company produced 8,508 tonnes of CO<sub>2</sub> resulting from its construction activities. This comprises a significant overall decrease of 699 tonnes compared to the previous year. When benchmarked against turnover, the figures demonstrate a welcome reduction of 19 tonnes of CO<sub>2</sub> per £1 million of turnover.

Over the longer term we expect the gradual move towards sustainable energy sources and greater fuel efficiency will contribute to a reduction in our average CO<sub>2</sub> emissions.



## ENVIRONMENTAL STATEMENT 2008

### ENVIRONMENTAL KPIs (Continued)

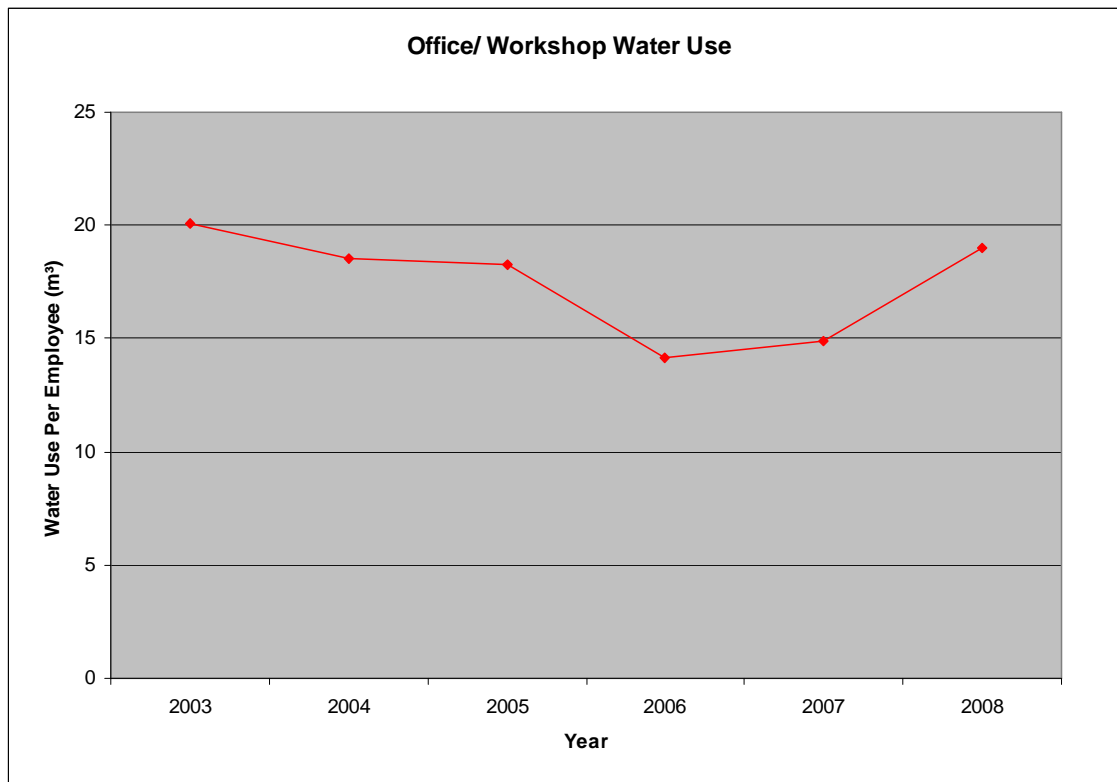
#### Company Office/ Workshop Water Use

We measure the volume of water consumed by all our offices and workshops. We exclude water consumed by our construction projects because the supply is often provided via unmeasured sources such as unmetered standpipes.

	2004	2005	2006	2007	2008
Creeting Office/ Workshop (m <sup>3</sup> )	1,531	1,706	1,256	1,366	1,471
Huntingdon Office/ Workshop (m <sup>3</sup> )	375	413	415	451	418
Addington Office	0	0	0	0	50
<b>Total Water Use (m<sup>3</sup>)</b>	<b>1,906</b>	<b>2,119</b>	<b>1,571</b>	<b>1,817</b>	<b>1,939</b>
Total Office/ Workshop Employees	103	116	118	122	102
<b>Water Use Per Employee (m<sup>3</sup>)</b>	<b>18.5</b>	<b>18.3</b>	<b>14.2</b>	<b>14.9</b>	<b>19.0</b>

During 2008 our facilities consumed a total of 1,939m<sup>3</sup> of water, an overall increase of 122m<sup>3</sup> compared to the previous year. When compared to the numbers employed, which decreased during the year, average consumption per employee increased to 19.0m<sup>3</sup>.

During the year we installed grey water systems for toilet flushing at our Huntingdon office and for plant and vehicle washdown at our Creeting office. Therefore, we expect to see a decrease in both overall and average water consumption in 2009.



## ENVIRONMENTAL STATEMENT 2008

### ENVIRONMENTAL KPIs (Continued)

#### Company Recycled Aggregate Use

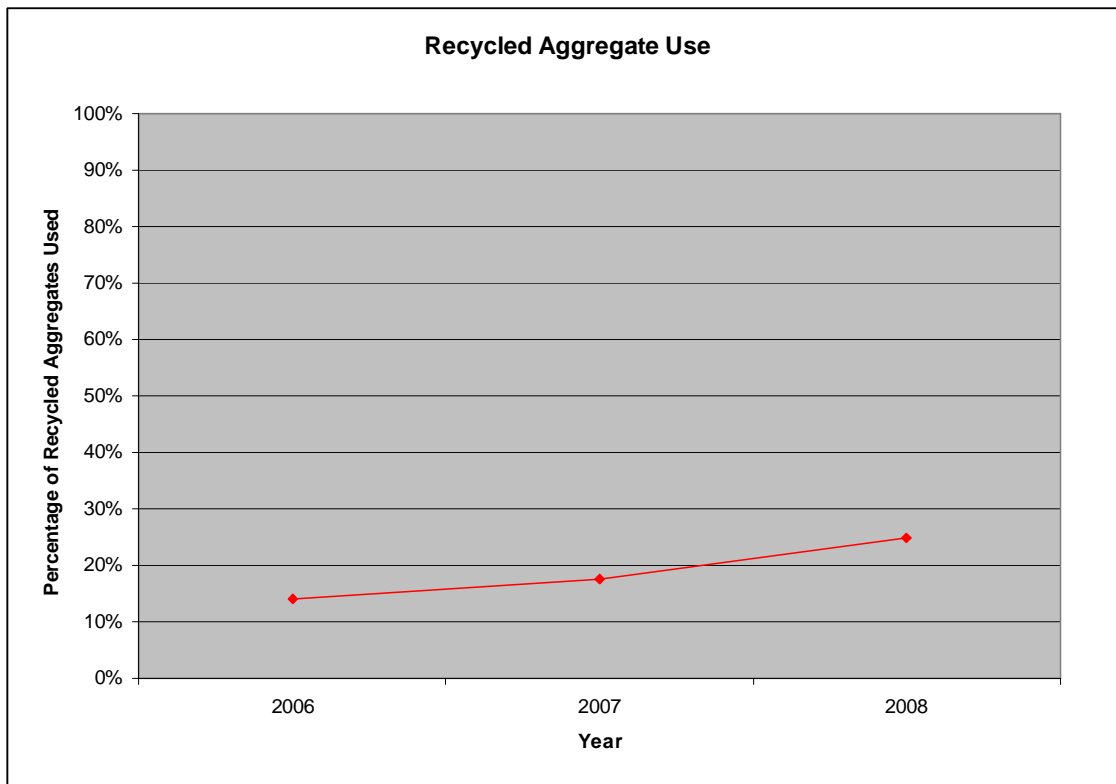
We measure the value of all recycled aggregates incorporated into our construction projects. Our calculation is based upon the cost of recycled aggregates expressed as a percentage of the cost of all aggregates.

This methodology benefits from being simple, but is constrained by measuring cost rather than volume. However, similar data obtained from three years of measurement provides a degree of confidence in the methodology used.

	2006	2007	2008
Total Value of Recycled Aggregates	£653,626	£964,387	£1,113,515
Total Value of Primary Aggregates	£4,023,245	£4,542,728	£3,374,778
<b>Percentage of Recycled Aggregates</b>	<b>14%</b>	<b>18%</b>	<b>25%</b>

During the year we increased our usage of recycled aggregates to 25% of all aggregates consumed, a satisfactory improvement of 7% on the previous year.

We would expect a gradual increase in recycled aggregate use over the longer-term to reflect an increasing environmental awareness of the construction industry and the impact of government policy such as landfill tax.



## ENVIRONMENTAL STATEMENT 2008

### ENVIRONMENTAL KPIs (Continued)

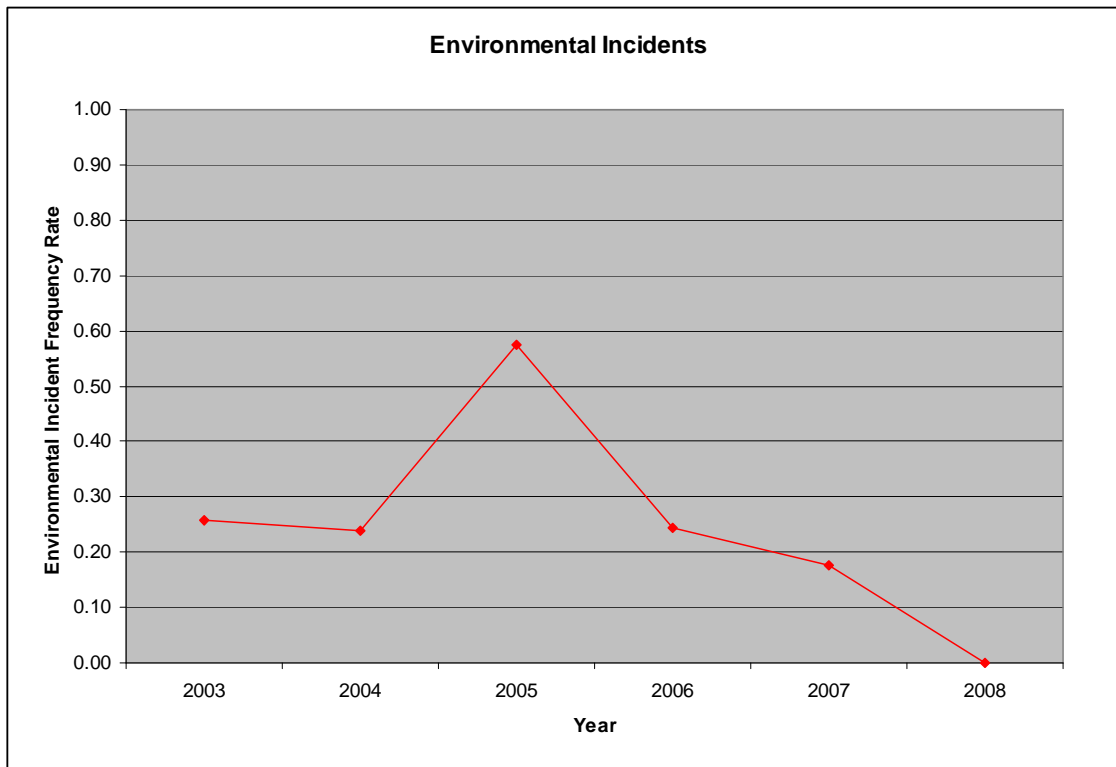
#### Number of Environmental Incidents

We measure the total number of environmental incidents and near misses reported by our construction projects, workshops and yards. The total number of incidents is benchmarked against the total hours worked per year to give an Environmental Incident Frequency Rate. The data collected indicates the efficacy of our Environmental Management System in minimising our impact upon the natural and built environment.

	2004	2005	2006	2007	2008
Oil and Chemical Spills	1	6	2	3	0
Silt Pollution	1	0	0	0	0
Sewage Pollution	1	0	1	0	0
Wildlife Disturbance	0	2	1	0	0
Nuisance	0	0	0	0	0
Watercourse Consents	0	1	0	0	0
<b>Total Environmental Incidents</b>	<b>3</b>	<b>9</b>	<b>4</b>	<b>3</b>	<b>0</b>
Total Hours Worked Per Year	1,264,032	1,569,515	1,646,577	1,697,035	1,228,401
<b>Environmental Incident Frequency Rate</b>	<b>0.24</b>	<b>0.57</b>	<b>0.24</b>	<b>0.18</b>	<b>0.00</b>

We are pleased to report that during 2008 there were no reportable environmental incidents recorded by the Company. This represents a reduction in incidents for a fourth consecutive year.

We are also pleased to confirm that the Company has never been prosecuted for any breach in environmental legislation.



## ENVIRONMENTAL STATEMENT 2008

### ENVIRONMENTAL KPIs (Continued)

#### Company Waste Production

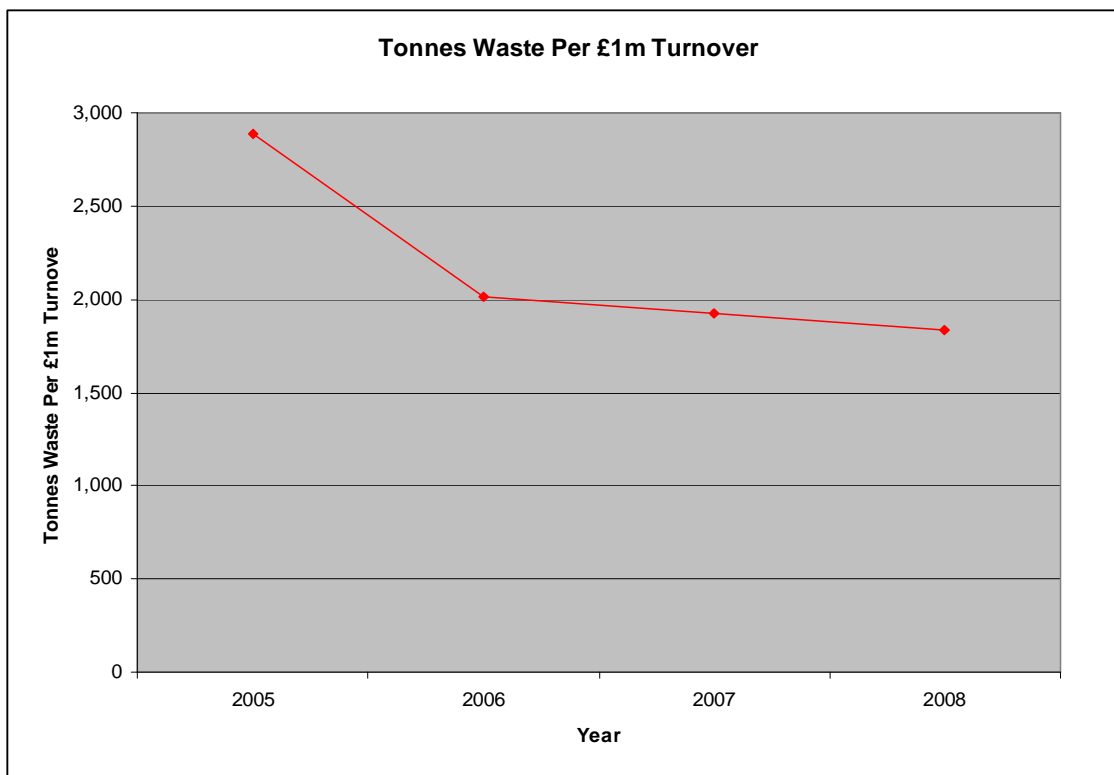
We measure the total volume of waste produced by our offices, workshops, yards and construction sites. The figures encompass waste in skips from all facilities and muck away from construction sites.

There will be natural fluctuations in waste production due to the type of work undertaken and the consequent volume of muck away. However, we expect that there will be a reduction in waste production over the long-term due to the effect of government policies such as landfill tax and our own initiatives to increase recycling and reduce waste.

	2005	2006	2007	2008
Muck Away (m <sup>3</sup> )	233,351	170,415	117,566	128,962
Skips (m <sup>3</sup> )	9,049	7,175	12,208	5,746
Scrap Metal (m <sup>3</sup> )	61	184	226	171
<b>Total Waste (m<sup>3</sup>)</b>	<b>242,461</b>	<b>177,774</b>	<b>130,001</b>	<b>134,879</b>
Turnover	£85,497,395	£88,281,690	£67,979,649	£73,542,720
<b>Metres<sup>3</sup> of Waste Per £1 Million Turnover</b>	<b>2,836</b>	<b>2,014</b>	<b>1,912</b>	<b>1,834</b>

During 2008 overall waste produced by the Company increased by 4,878m<sup>3</sup>. However, when benchmarked against turnover, the data indicates that we reduced waste production per unit of output for the fourth consecutive year.

As stated above, we anticipate waste production to decrease over the long term as a consequence of government policy together with an increasing environmental awareness within the industry.





## **ENVIRONMENTAL STATEMENT 2008**

### **REVIEW OF ENVIRONMENTAL TARGETS FOR 2008**

**Target:** Introduce Site Waste Management Plans

**Status:** Achieved

At the start of 2008 we introduced Site Waste Management Plans across all construction projects with an anticipated cost of over £300,000, thereby complying with the Site Waste Management Plan Regulations 2008.

The Plans were included within our site cost database system and training was provided to appropriate construction personnel as required.

**Target:** Install a grey water system for plant/ vehicle washdown at the Creeting Workshop

**Status:** Achieved

During 2007 the Company invited and funded pupils of Stowupland High School to study various grey water management options for our washdown facility at our Creeting Workshop. The project was organised by the Royal Academy of Engineering through their Engineering Education Scheme.

The pupils reported their findings in early 2008 and the best option was developed into a workable design. The facility was completed and came on stream during the summer.

We anticipate that the new facility will significantly reduce water use at our Creeting workshop for years to come.

**Target:** Achieve Forest Stewardship Council (FSC) Chain of Custody Certification

**Status:** Not Achieved

Although paperwork procedures were put in place there was insufficient time during the year to arrange and complete the auditing process. We will reintroduce this target in 2009.

## ENVIRONMENTAL STATEMENT 2008

### ENVIRONMENTAL PROJECTS COMPLETED IN 2008

#### RIVER WANDLE VEGETATION MANAGEMENT



---

<b>Client:</b>	Environment Agency
<b>Engineer:</b>	Environment Agency
<b>Location:</b>	River Wandle, London Borough of Sutton
<b>Contract Value:</b>	£66,807
<b>Contract Period:</b>	12 Weeks

---

This project is one of a number of schemes undertaken by the Company to manage vegetation in various rivers throughout the Environment Agency's Thames region. This particular project comprised the removal of Floating Pennywort (*Hydrocotyle ranunculoides*), a highly invasive species, from 12 locations on the River Wandle in south east London.

#### Project Details:

- Removal of Pennywort at 12 locations from bankside and in river.
- Drying out of the vegetation along the river bank.
- Removal of the Pennywort to a designated waste facility.

## ENVIRONMENTAL STATEMENT 2008

### ENVIRONMENTAL PROJECTS COMPLETED IN 2008

#### CANVEY ISLAND SEAFRONT REGENERATION



---

<b>Client:</b>	East of England Development Agency
<b>Engineer:</b>	Scott Wilson
<b>Location:</b>	Canvey Island, Essex
<b>Contract Value:</b>	£504,383
<b>Contract Period:</b>	9 Weeks

---

The project encompassed various improvement works to Canvey Island Seafront, between the eastern and western esplanades.

#### Project Details:

- Demolition of existing toilet block
- Removal of asbestos materials.
- Refurbishment works to the bandstand and surrounding area.
- Environmental improvements to the Welcome Hut Café area.
- Repairs to the existing tidal paddling pool including new sheet piling.
- Cleaning and application of a decorative finish to the sea wall.
- Hard and soft landscaping works.

## ENVIRONMENTAL STATEMENT 2008

### ENVIRONMENTAL PROJECTS COMPLETED IN 2008

#### REPLACEMENT OF HARTHAM WEIR



---

<b>Client:</b>	Environment Agency
<b>Engineer:</b>	Halcrow
<b>Location:</b>	River Lee, Near Hertford, Hertfordshire
<b>Contract Value:</b>	£310,000
<b>Contract Period:</b>	12 Weeks

---

The project comprised the replacement of a 30 year old weir at Hartham Common on the River Lee. The project was undertaken to prevent riverbed erosion near to a major sewerage pipe located just downstream of the weir. The new weir was constructed downstream of the sewerage pipe.

#### Project Details:

- Temporary diversion of the river to enable construction work.
- Demolition of the existing weir and recycling of the material on site.
- Provision of a new layer of gravel to protect the pipeline.
- Construction of a new more unobtrusive two-step granite weir with two-metre-wide passes, allowing fish migration and an improved facility for local canoeists.
- Placement of gravel along the centre of the channel and rocks of various sizes along the banks for invertebrate passage and a fish refuge.

## **ENVIRONMENTAL STATEMENT 2008**

### **ENVIRONMENTAL OBJECTIVES AND TARGETS FOR 2009**

#### **Environmental Objectives**

J Breheny Contractors Ltd Environmental Objectives for 2009 are to comply with all appropriate environmental legislation and regulations and to strive for continuous improvement in:

- Efficient use of energy and water
- Recycling of material
- Reducing emissions to air, land and water
- Minimising our impact on the natural and built environment
- Minimising waste disposal to landfill

#### **Environmental Targets**

J Breheny Contractors Ltd Environmental Targets for 2009 are to:

- Investigate insulation provision at Company offices and improve where necessary to reduce energy use from heating and air conditioning.
- Trial the use of the Environment Agency's Carbon Calculator on a construction project.
- Register a construction project with the Civil Engineering Environmental Quality Assessment and Award Scheme (CEEQUAL).
- Achieve Forest Stewardship Council (FSC) and Programme for the Endorsement of Forest Certification (PEFC) Chain of Custody Certification.
- Incorporate the Environmental Management System into an integrated SHEQ System.
- Review and improve the Company's Environmental Training Programme.

#### **Review of Objectives and Targets**

All Environmental Objectives and Targets will be reviewed on a 6-monthly basis at Group Quality, Health and Safety and Environmental Meetings.



**John Breheny – Chairman**



## **ENVIRONMENTAL STATEMENT 2008**

### **ENVIRONMENTAL PROGRAMME FOR 2009**

#### **Investigate insulation provision at Company offices and improve where necessary**

##### **Action**

Investigate insulation provision at Company offices in Suffolk, Cambridgeshire and Kent and undertake improvements as necessary.

##### **Responsibility**

*John Breheny*

#### **Trial the use of the Environment Agency's Carbon Calculator.**

##### **Action**

Trial the effectiveness of the Environment Agency's Carbon Calculator in measuring the carbon footprint of a construction project.

##### **Responsibility**

*John Breheny*

#### **Register a construction project with CEEQUAL.**

##### **Action**

Register a construction project with the Civil Engineering Environmental Quality Assessment and Award Scheme (CEEQUAL) in order to investigate the scheme as a means of improving project sustainability.

##### **Responsibility**

*John Breheny*

#### **Achieve FSC and PEFC Chain of Custody Certification.**

##### **Action**

Undertake work as necessary to achieve Chain of Custody Certification from the Forest Stewardship Council and Programme for the Endorsement of Forest Certification (PEFC) in order to provide assurance that timber used on our projects is FSC approved.

##### **Responsibility**

*John Breheny*

#### **Incorporate the Environmental Management System into an integrated SHEQ system.**

##### **Action**

Combine individual systems: Environment (ISO 14001/ EMAS), Health and Safety (OHSAS 18001) and Quality (ISO 9001) into an integrated single set of systems and procedures.

##### **Responsibility**

*Keith Scarff*  
*John Breheny*

#### **Review and improve the Company's Environmental Training Programme.**

##### **Action**

Review all aspects of the Company's Environmental Training and procedures and make improvements as necessary.

##### **Responsibility**

*John Breheny*  
*Keith Scarff*

#### **Review of Environmental Programme**

The Environmental Programme will be reviewed on a 6-monthly basis at Group Quality, Health and Safety and Environmental Meetings.

**John Breheny – Chairman**



## **ENVIRONMENTAL STATEMENT 2008**

### **EMAS DECLARATION**

This Environmental Statement has been validated as a true record of the environmental performance of J Breheny Contractors Ltd, in accordance with the requirements of Council Regulation (EC) No. 761/2001

Signed

Date

John E Walton

For and behalf of:

BM Trada Certification Ltd.  
Stocking Lane  
Hughenden Valley  
High Wycombe  
Buckinghamshire  
HP14 4ND

Accreditation Number: UK-V-0008